

SUBSISTENCE FISHERIES CO-MANAGEMENT IN KZN

In 2001, a Subsistence Fisheries Management Unit was established to implement and manage subsistence fishing in KwaZulu-Natal. This unit is based at Ezemvelo KZN Wildlife's regional office in Durban and comprises 1 manager, 1 administration coordinator, 1 data capture clerk and 4 field extension officers.

Through the dedication and commitment of this dynamic team, a total of 11 subsistence fishing communities have been identified. This was done through a series of community workshops facilitated by EKZN Wildlife staff and the Subsistence Fisheries Management Unit. A total of 43 local co-management committees have been established along the coast in the line fish, intertidal and fish trap sectors to co-manage the marine resources and implement the subsistence fisheries management plans. These co-management committees have been empowered in institutional functioning, conflict resolution and decision making on sustainable resource management.



An aerial view of Kosi Bay's extensive network of palisade fish kraals

On a national basis, fishing permits will be only issued once co-management committees have been officially established and recognised, and having successfully completed the prescribed training programme. However, due to the significant progress that has been made in KwaZulu-Natal, exemption permits valid for one year have been issued to those co-management committees that have successfully met all requirements.

Due to the outstanding efforts of the Subsistence Fisheries Management team, the work being carried out within KwaZulu-Natal has paved the way for management approaches nationally. *Wayne Munger, EKZN Wildlife*

DISTRICT COASTAL WORKING GROUPS

To build on the benefits of the KZN Provincial Coastal Committee (PCC), the Department of Agriculture and Environmental Affairs has promoted the establishment of Coastal Working Groups (CWGs) in the coastal-located district municipalities.

The purpose of the CWGs is to promote better coordination between district coastal stakeholders as well as to improve lines of communication between the National, Provincial and Local spheres of government. To date, four district CWGs have been established.

If your organisation would like to participate in any of the district coastal working groups, contact the persons listed below:

- **uThungulu CWG:** Ms Elitza Marais
Tel: (035) 799 2578 • plan@uthungulu.co.za
- **Ilembe CWG:** Ms Pravina Govender
Tel: (032) 947 9632 • pravina@ilembe.org.za
- **eThekwini CWG:** Mr Andrew Mather
Tel: (031) 300 2281 • mathera@cesu.durban.gov.za
- **Ugu CWG:** Ms Nontsundu Ndonga
Tel: (039) 688 5806 • nontsundu@ugu.org.za

U-ZONE

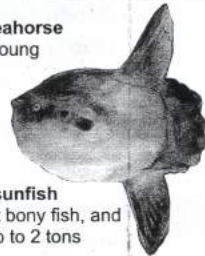
UNUSUAL FISH



The hagfish is a primitive, jawless fish often mistaken for a snake



The male seahorse broods the young in a pouch



The ocean sunfish is the largest bony fish, and can weigh up to 2 tons

Mudskippers can walk out of water, and are found in mangrove swamps



Ulwandle extends its congratulations to Tandí Breetzke, head of the KZN Coastal and Special Areas Management Unit, who gave birth to a bouncing baby boy on 10 December 2004.



Photo: O Parak

WIN WIN WIN

Win one of three Coastcare golf shirts!
Q What is the name of this popular Blue Flag beach in KZN?



Photo: O Parak

Closing Date:
31 May 2005.
Winners will be notified by post.

Send your answer to the address below



"Ulwandle", which means "sea" in Zulu, is produced by the KwaZulu-Natal Coastal & Special Areas Management Unit

Send all correspondence to:
Omar Parak, KwaZulu-Natal Coastal Coordinator,
Department of Agriculture and Environmental Affairs,
Private Bag X9059, Pietermaritzburg, 3200
Tel: (033) 355 9438 | Fax: (033) 355 9614
E-mail: parako@dae.kzntl.gov.za



Ulwandle

ISSUE 13
AUTUMN - 2005
KWAZULU-NATAL'S COASTAL MANAGEMENT NEWSLETTER

MORE BLUES FOR KZN'S BEACHES!

The 2004/5 Blue Flag list for South Africa, announced on 22 October 2004 - National Marine Day - shows a real increase in the number of Blue Flag beaches and pilot beaches. KwaZulu-Natal again leads the way with 7 Blue Flag beaches and 8 pilot beaches.

The full list of Blue Flag beaches is:

- Umhlanga Rocks Main Beach • South Beach, Durban
- Hibberdene Beach
- Lucien Beach, south coast KZN (new)
- Margate Main Beach • Ramsgate Beach
- Marina/San Lameer Beach, south coast KZN
- Well's Estate, north of Port Elizabeth (new)
- Humewood, Port Elizabeth
- Dolphin Beach, Jeffrey's Bay (new)
- Grotto Beach, Hermanus
- Kleinmond Beach, near Hermanus (new)
- Mnandi Beach, Strandfontein (new)
- Clifton 4th Beach, Cape Town (new)



Blue Flag South Africa

The number of beaches entering the campaign as pilots is indicative of the growing interest in Blue Flag in this country. For this season, nineteen beaches will participate as pilot beaches.

In KZN, these are:

- Uvongo Beach
- Scottburgh Beach
- Anstey's Beach, Bluff
- Addington Beach, Durban
- Bay of Plenty Beach, Durban
- Country Club Beach, Durban
- Battery Beach, Durban
- Bronze Beach, Umhlanga

Photo: O Parak



Umhlanga Rocks Main Beach

As South Africa participates in its fourth season of Blue Flag, we can proudly say that we are achieving excellence in beach management and that our beaches rate among the best in the world.

For more information contact:
Alison Kelly, National Blue Flag Coordinator
Tel: (033) 330 3931 • alisonk@futurenet.co.za

CASE STUDY: INAPPROPRIATE DEVELOPMENT IN AN ESTUARY

Extensions to the La Mercy recreational development began in 2000 after a Record of Decision was issued, authorising construction to proceed. Most, if not all, of the extensions fell within the 1:100 year floodplain of the Umdloti River and within the potential sea erosion line.

Photo: O Parak



In January 2001 (during construction), a northerly breach of the lagoon caused erosion of the seaward end of the concrete ramp resulting in the

collapse of the ramp paving. In September 2001, high seas and rain caused further damage to the development, culminating in the undermining of the embankment, car park and timber jetty in February 2002. All work was suspended on the site and the Provincial Department of Agriculture and Environmental Affairs issued a directive to the eThekweni Municipality to remove the damaged structures by 2 April 2002.

The directive required the municipality to provide a rehabilitation plan, for approval by the Provincial authority, prior to any work commencing on the site. The rehabilitation was also required to follow a public consultation process similar to a scoping report and this commenced in 2003. On 12 March 2004, a Record of Decision was given supporting the proposed rehabilitation.

The full Environmental Management and Rehabilitation Plan for La Mercy can be viewed at: http://www.durban.gov.za/eThekweni/Municipality/municipality_news/la_mercy

For more information contact:

Andrew Mather, Project Executive: Coastal Policy, eThekweni Municipality

Tel: (031) 300 2281 • mathera@cesu.durban.gov.za

COASTAL LIVELIHOOD PROJECTS

UNDER THE SPOTLIGHT IN THIS ISSUE:

VETIVER GRASS:

Promoting sustainable livelihoods through donga reclamation, sustainable agriculture and SMME opportunities

Funded by the United Kingdom's Department for International Development (DFID) via the SCLP (DEAT)

Limited income generating opportunities within poor coastal communities has resulted in increasing pressure on the one resource that is available at no immediate apparent cost – the land. This has resulted, in some cases, in unsustainable land use practices and land degradation. This project focuses on the use of vetiver in halting and reversing such degradation.

Vetiver has a number of physical properties that make it ideal for such use, particularly simplicity of application by resource-poor communities. Vetiver has been established at a number of degraded sites and is already effectively reducing and controlling soil erosion. The project is also engaging in education and awareness around resource degradation, sustainable agriculture, investigating business opportunities around the extraction of vetiver essential oil and applying the vetiver system on behalf of clients. Lessons learnt from this project will be used to inform best practices around addressing land degradation, particularly within rural areas.



SCLP Coordinators Omar and Jacques demonstrating sediment deposition within a donga (This is six months after planting and Jacques [at the back] is about a foot taller than Omar!)



Project participants watering newly planted vetiver



Vetiver grass used to protect a low-cost house in an urban setting

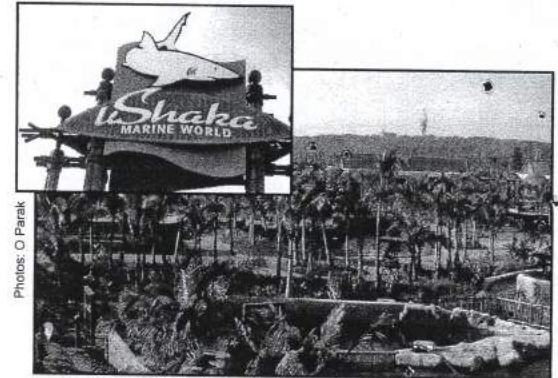
Photos: J McCosh

For more information contact:

Jon McCosh, Project Manager, Institute of Natural Resources (INR)
Tel: (033) 346 0796 • mccoshj@ukzn.ac.za

NPC SEA WORLD EDUCATION CENTRE

The South African Association for Marine Biological Research (SAAMBR) has three divisions: Sea World, the Oceanographic Research Institute (ORI) and the NPC Sea World Education Centre. The NPC Sea World Education Centre at uShaka Marine World, Durban opened in May 2004 and is offering a number of exciting courses and lessons using 20 years of experience in marine education. The Education Centre will use the vast facilities of the fantastic new Marine World and the expertise of in-house scientists to encourage an interest in the sea through curriculum-based courses and lessons.



Photos: O Parak

Some of the common activities include:

- ☆ **Marine Magic Workshops**
- for foundation phase learners - lots of fun!
- ☆ **Marine Life Courses**
- intensive courses for senior primary learners
- ☆ **Senior School Workshops**
- assisting learners who have taken Biology and Geography as subjects
- ☆ **Holiday Workshops**
- ☆ **Workshops for Educators**
- empowers educators to develop their own teaching material
- ☆ **Technikon Nature Conservation**
- course in fisheries management
- ☆ **Sustainable Resource Management**
- courses in marine resource management for senior personnel and field staff

For more information contact:

Jone Porter, NPC Sea World Education Centre
Tel: (031) 328 8222 • jporter@seaworld.org.za